

HEAD PHANTOM STROKE / BLEED

Age Category	Adult
Body Region	Head
Target Modality	CT
Diagnostic Features	Infarction, hemorrhage



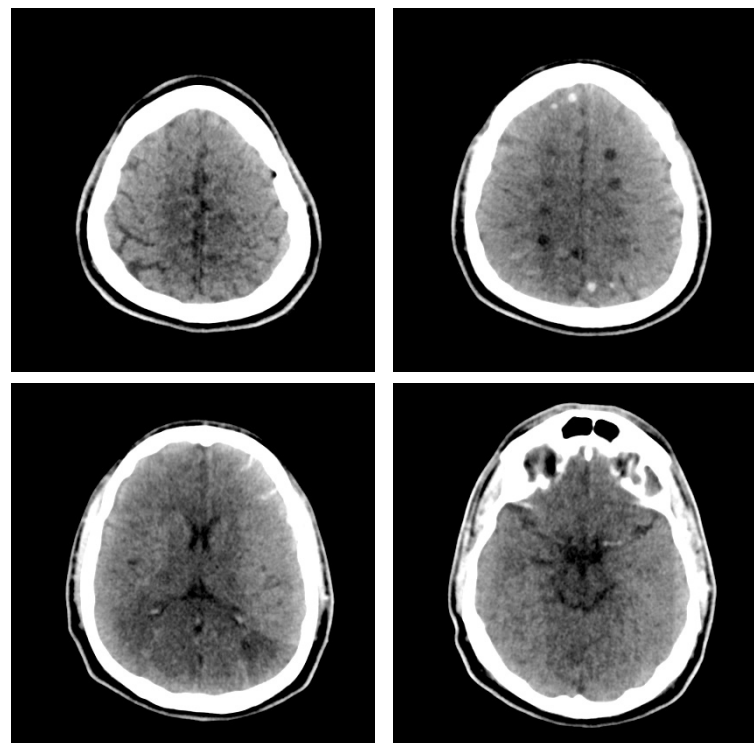
This phantom simulates a head with stroke and bleeding patterns. It covers the vertex to the foramen magnum.

Stroke patterns include signs of early infarction (hyperdense middle cerebral artery, disappearing basal ganglia), acute and subacute watershed infarcts, and lacunar infarctions of varying ages.

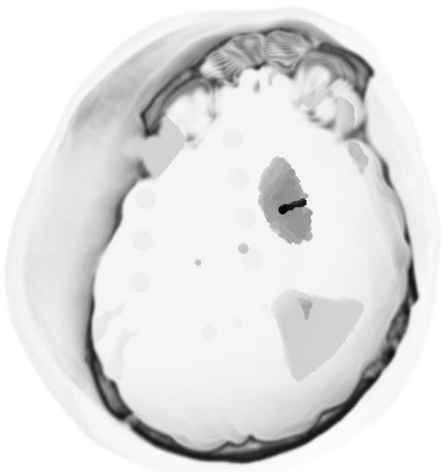
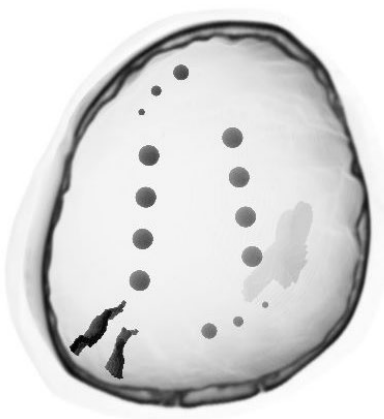
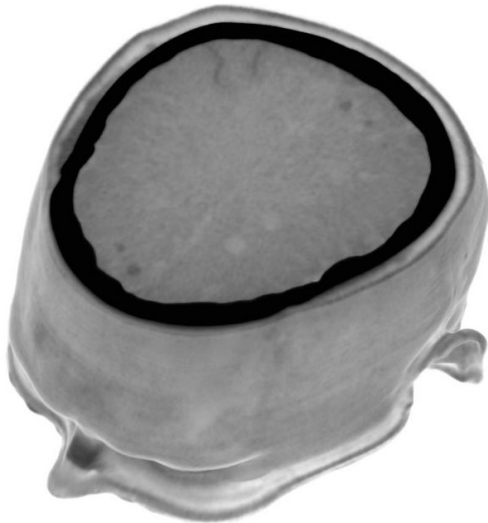
Bleeding patterns include subarachnoid hemorrhage, subdural hemorrhage of varying ages, intraventricular hemorrhage, and intracerebral hemorrhage.

The phantom can be used in CT (including CBCT) to evaluate and optimize imaging performance and AI-enabled diagnosis.

The phantom provides a detailed and realistic simulation of common brain pathologies, soft and bone tissues. Air voids are filled with a cellulose-polymer composite of approx. -160 HU.



HEAD PHANTOM STROKE / BLEED



Specifications

Size	Approx. 190 x 210 x 147 mm
Weight	Approx. 2640 g
Base material	Cellulose-polymer composite
Optimal tube voltage	120 kVp (cf page 6) - adaptable upon request -

Diagnostic features

Stroke

- Hyperdense middle cerebral artery (MCA) and disappearing basal ganglia on the left side
- Watershed infarcts in middle/posterior (MCA/PCA) and anterior/middle cerebral artery (ACA/MCA) territories
- 8 lacunar infarcts of varying ages

Hemorrhage

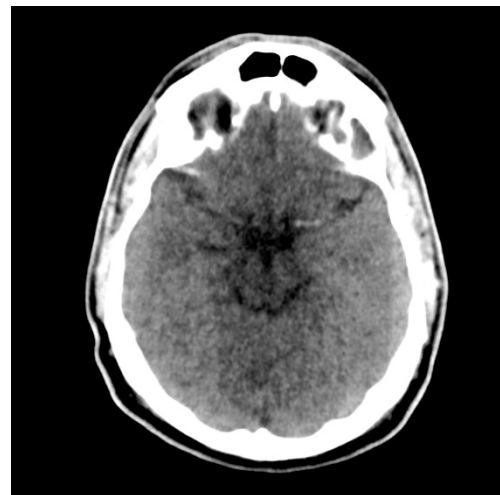
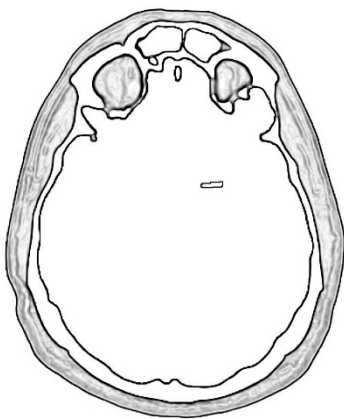
- Subarachnoid hemorrhage (2 territories)
- Subdural hemorrhage of varying ages (3 territories)
- Intraventricular hemorrhage (left lateral ventricle)
- Intracerebral hemorrhage (2 thalamic, 6 subcortical)

For more information visit
www.phantomx.de

HEAD PHANTOM STROKE / BLEED

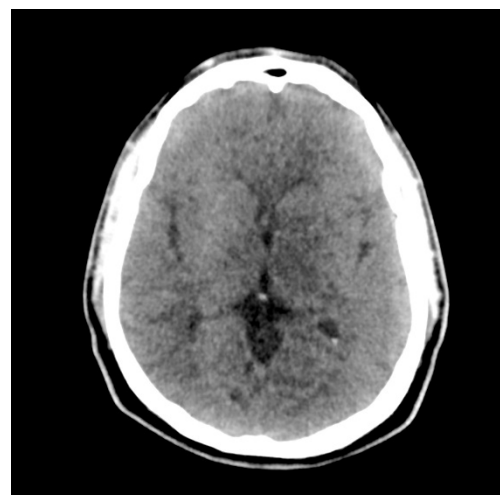
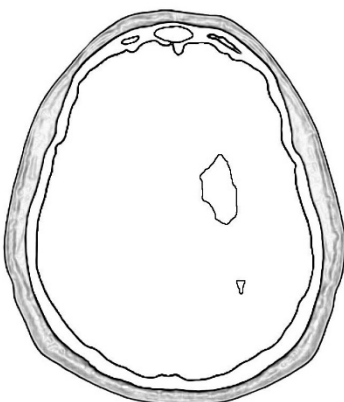
Infarction

- *Hyperdense middle cerebral artery (MCA), left side*



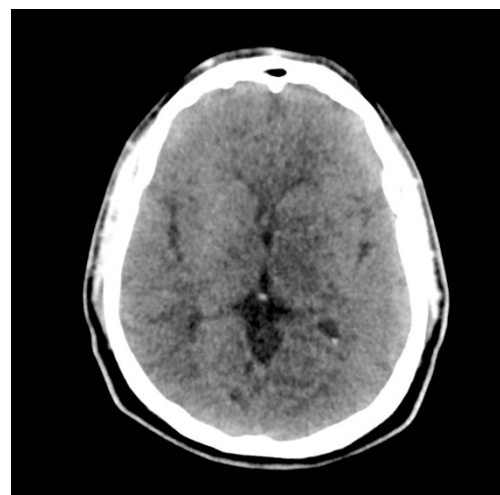
Infarction

- *Disappearing basal ganglia, left side*



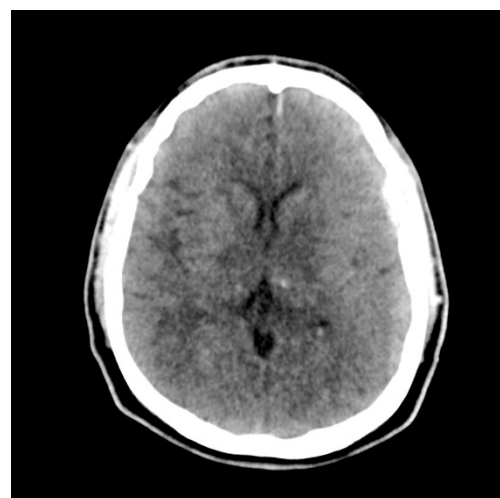
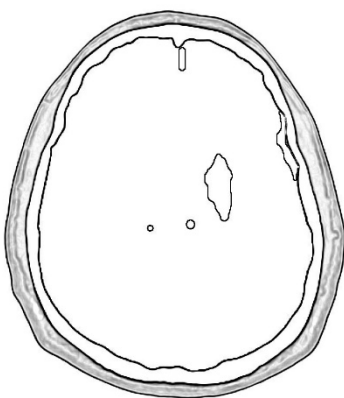
Hemorrhage

- *Intraventricular hemorrhage, left side*



Infarction

- *Disappearing basal ganglia, left side*



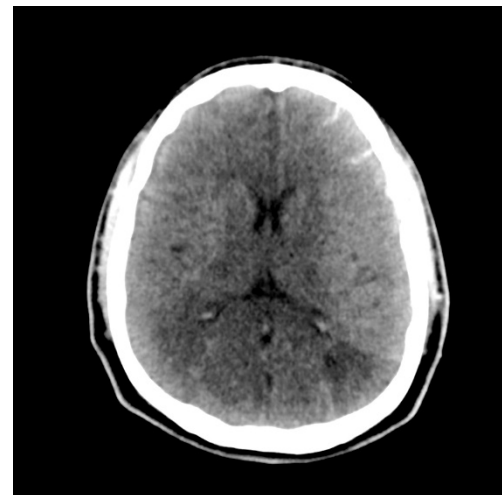
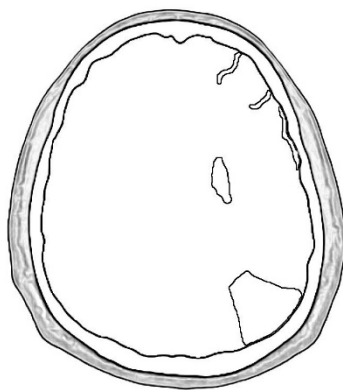
Hemorrhage

- *Thalamic hemorrhage, spherical, diameter: 2.5 mm (right side), 4 mm (left side)*
- *Acute subdural hemorrhage (left frontal and parafalcine)*

HEAD PHANTOM STROKE / BLEED

Infarction

- *Disappearing basal ganglia, left side*
- *Subacute watershed infarct MCA/PCA, left side*

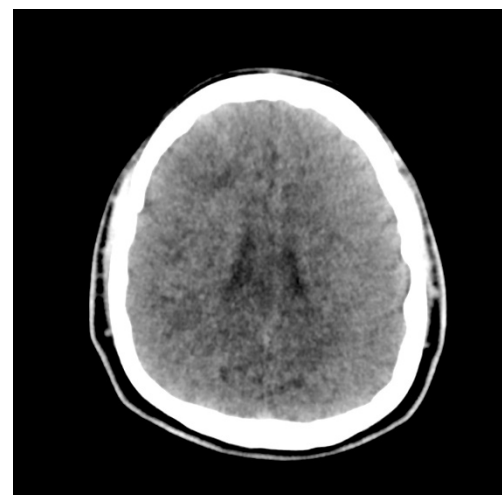
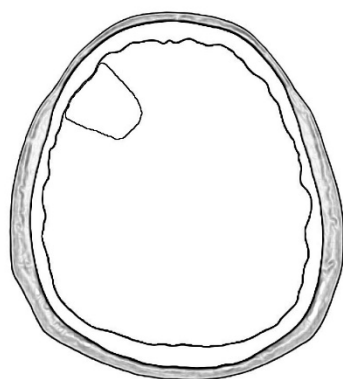


Hemorrhage

- *Acute subarachnoid hemorrhage, left frontal*

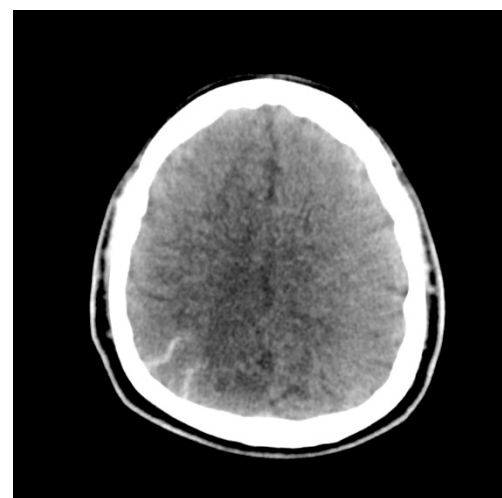
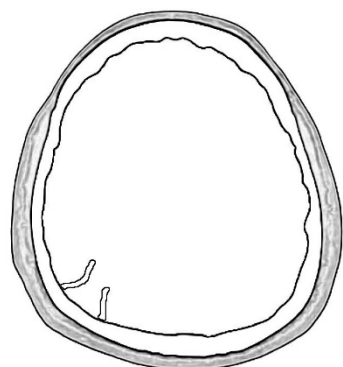
Infarction

- *Acute watershed infarct ACA/MCA, right side*



Hemorrhage

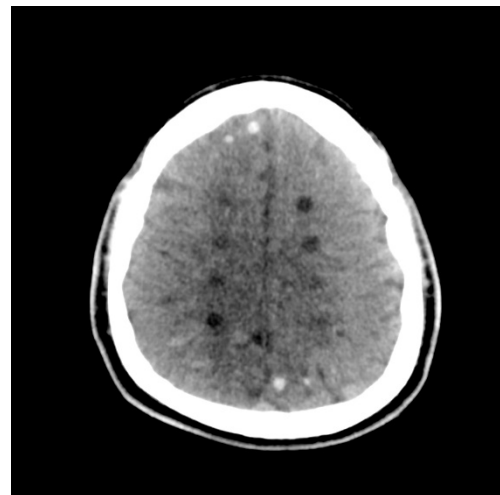
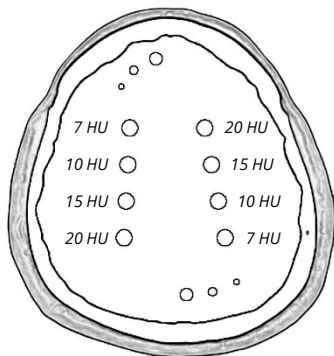
- *Acute subarachnoid hemorrhage, right parietal*



HEAD PHANTOM STROKE / BLEED

Infarction

- *Lacunar infarcts, spherical, diameter: 8 mm, contrast: 7 to 20 HU*

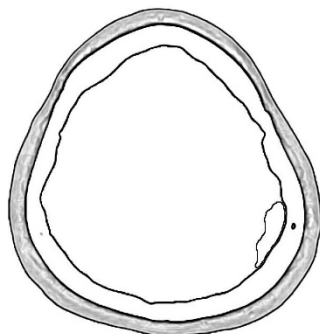


Hemorrhage

- *Acute intracerebral hemorrhage, spherical, diameter: 2.5, 4 and 6 mm*

Hemorrhage

- *Subacute subdural hemorrhage, left parietal*

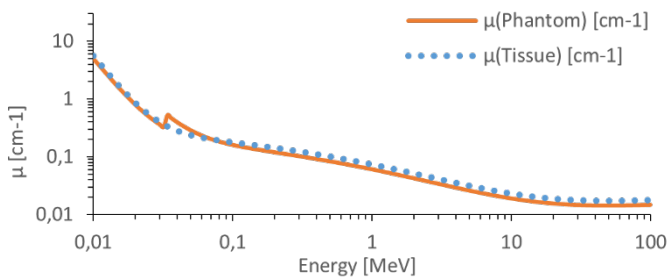


HEAD PHANTOM STROKE / BLEED

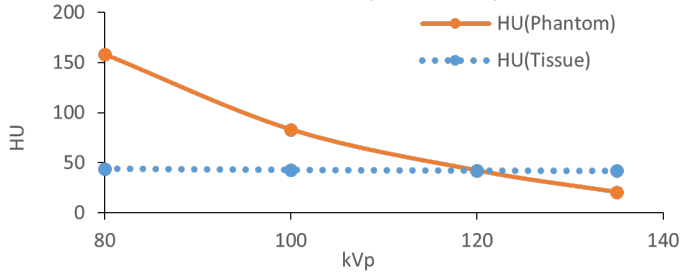
Attenuation properties

Soft Tissue

Linear attenuation coefficients [cm^{-1}] (calculated)

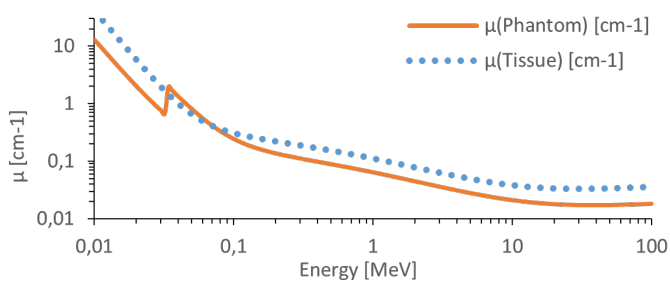


Hounsfield units (calculated)

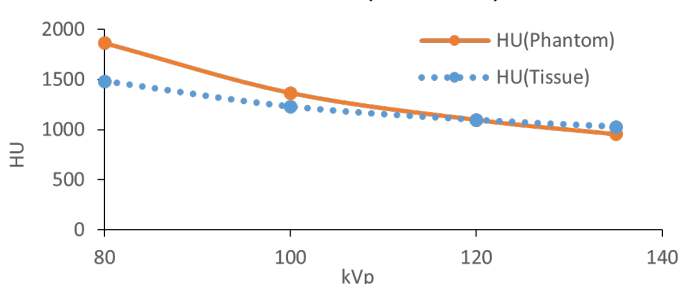


Bone Tissue

Linear attenuation coefficients [cm^{-1}] (calculated)



Hounsfield units (calculated)



Tissue Reference: Woodard HQ, White DR. The composition of body tissues. Br J Radiol. 1986.

General indications

- The phantom is made of a cellulose-polymer composite material with properties similar to hardwood. If handled carefully, it will last a long time.
- The phantom is coated with a protective layer. If the protective layer is undamaged, the phantom can be cleaned using a damp cloth (water or mild detergent).
- Protect from direct sunlight.
- Maintain a storage temperature of 10 °C to 30 °C. If the phantom is exposed to temperatures below -10 °C or above 45 °C, it can be severely damaged.
- The phantom is not equipped for dose measurements with dosimeters and it is not suited for material characterization with dual energy CT.
- The phantom is not certified as medical device.
- Air voids are filled with cellulose-polymer composite of approx. -160 HU.