

ABDOMEN PHANTOM ARTERIAL

Age
Category

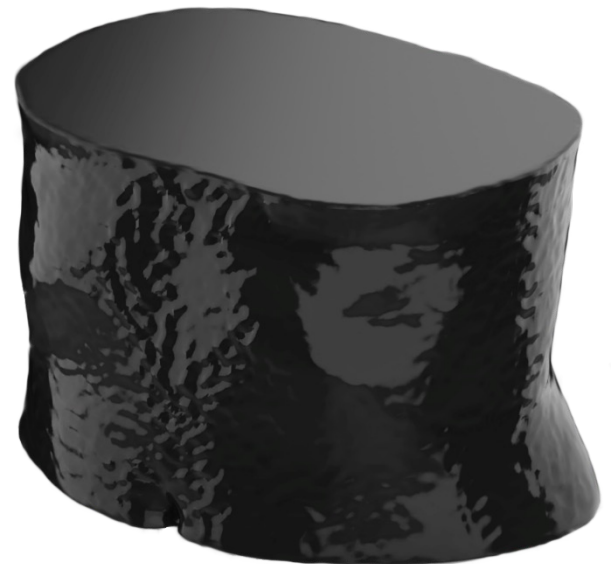
Adult

Body
Region

Abdomen

Target
Modality

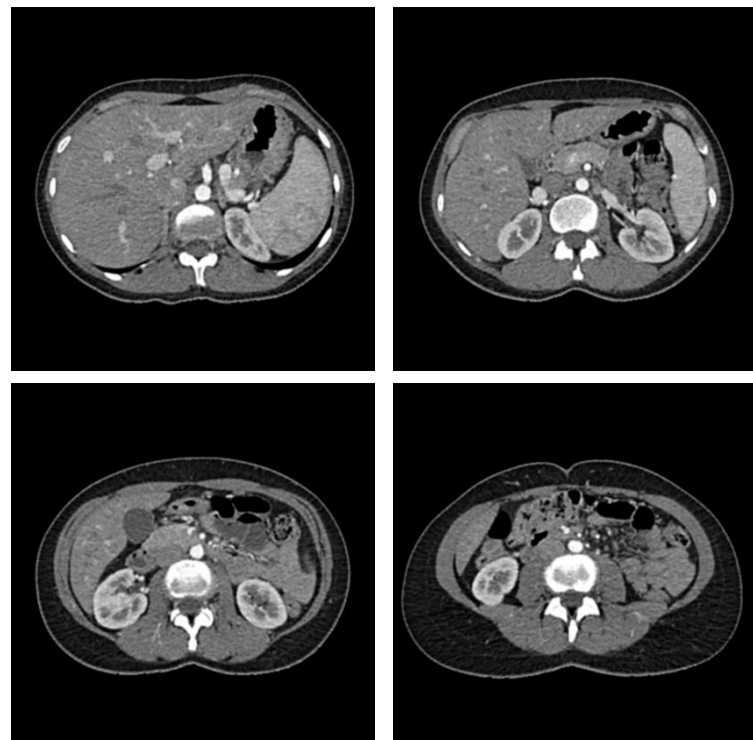
CT

Diagnostic
FeaturesVasculature, soft
and bone tissue

This phantom simulates a contrast medium enhanced abdomen in arterial phase. It covers the eleventh thoracic vertebra to the fourth lumbar vertebra (partially included).

The phantom can be used in CT (including CBCT) to evaluate and optimize imaging performance and post-processing applications, including AI-enabled applications. It is also suited for training purposes.

The phantom provides a detailed and realistic simulation of soft and bone tissue. Air voids are filled with a cellulose-polymer composite of approx. -160 HU.



ABDOMEN PHANTOM ARTERIAL

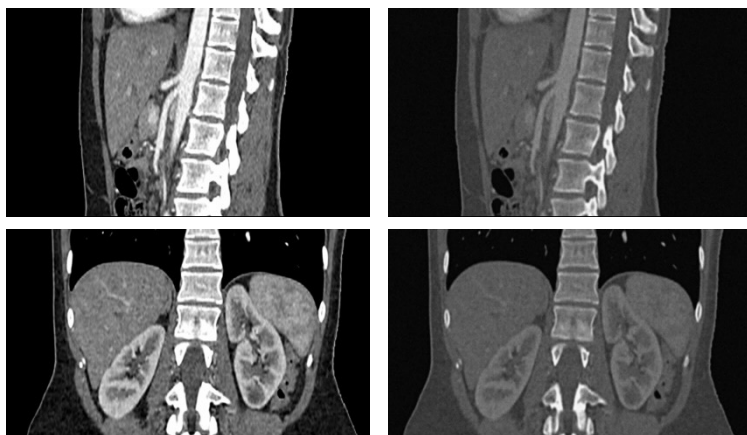


Specifications

Size	Approx. 268 x 178 x 167 mm
Weight	Approx. 5180 g
Base material	Cellulose-polymer composite
Optimal tube voltage	120 kVp (cf page 3) - adaptable upon request -

Diagnostic features

Realistic simulation of vasculature, bone and soft tissues, including the liver, gallbladder, pancreas, spleen, adrenals, kidneys, stomach, small intestine and colon.



For more information visit
www.phantomx.de

ABDOMEN PHANTOM ARTERIAL

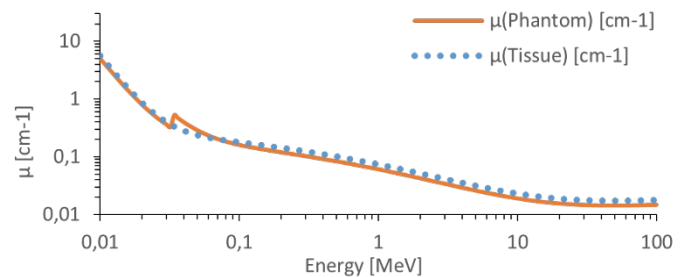
General indications

- The phantom is made of a cellulose-polymer composite material with properties similar to hardwood. If handled carefully, it will last a long time.
- The phantom is coated with a protective layer. If the protective layer is undamaged, the phantom can be cleaned using a damp cloth (water or mild detergent).
- Protect from direct sunlight.
- Maintain a storage temperature of 10 °C to 30 °C. If the phantom is exposed to temperatures below -10 °C or above 45 °C, it can be severely damaged.
- The phantom is not equipped for dose measurements with dosimeters and it is not suited for material characterization with dual energy CT.
- The phantom is not certified as medical device.
- Air voids are filled with cellulose-polymer composite of approx. -160 HU.

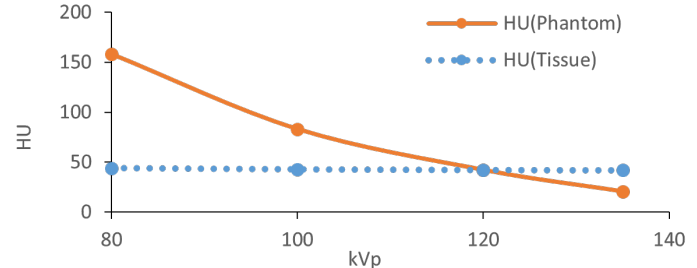
Attenuation properties

Soft Tissue

Linear attenuation coefficients [cm^{-1}] (calculated)

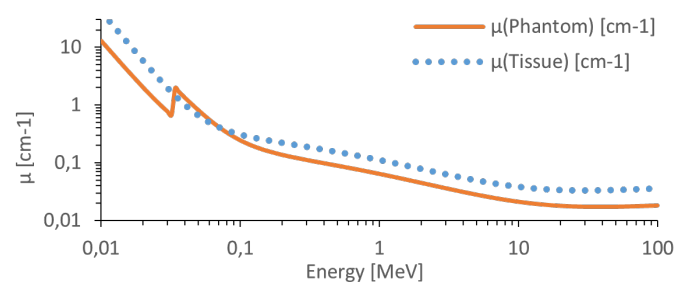


Hounsfield units (calculated)

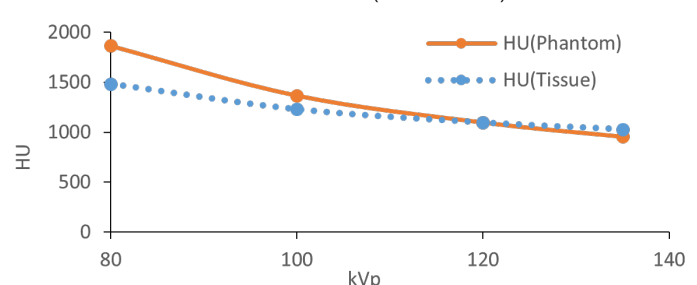


Bone Tissue

Linear attenuation coefficients [cm^{-1}] (calculated)



Hounsfield units (calculated)



Tissue Reference: Woodard HQ, White DR. The composition of body tissues. Br J Radiol. 1986.