

# ABDOMEN PHANTOM PV CIRRHOSIS

Age  
Category

Adult

Body  
Region

Abdomen

Target  
Modality

CT

Diagnostic  
Features

Liver cirrhosis

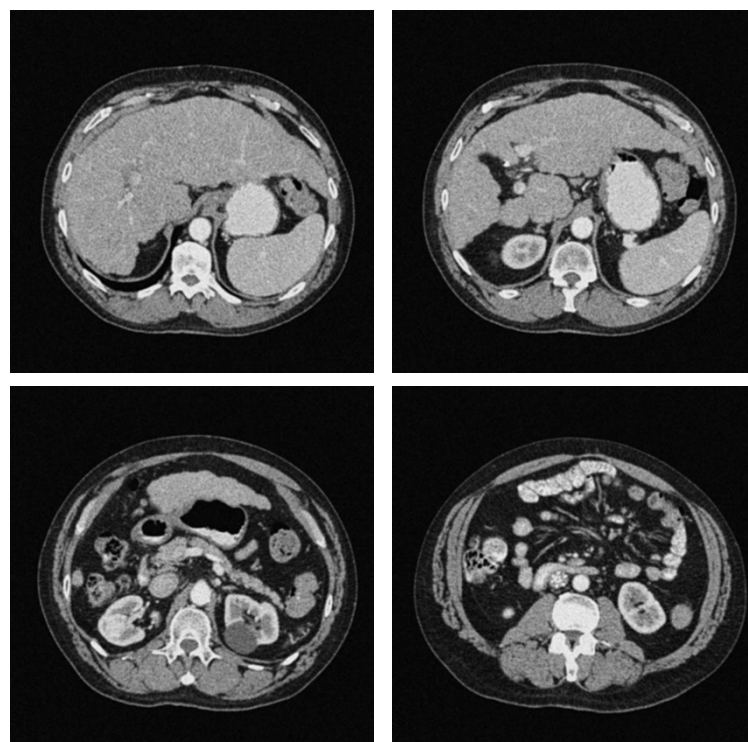


This phantom simulates a contrast medium enhanced abdomen in portal venous phase. It covers the tenth thoracic vertebra to the third lumbar vertebra.

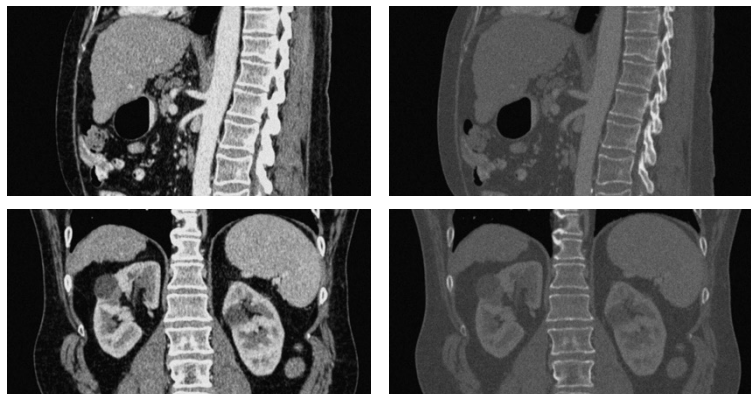
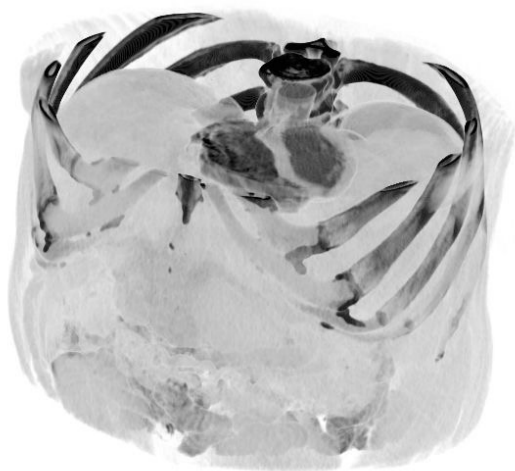
The phantom represents an abdomen after cholecystectomy with small clips. The liver has typical signs of cirrhosis and there is an inferior vena cava filter implanted at the level of the third lumbar vertebra. Both kidneys have cystic lesions and there is a small kidney stone on the left side.

The phantom can be used in CT (including CBCT) to evaluate and optimize imaging performance and post-processing applications, including AI-enabled applications. It is also suited for training purposes.

The phantom provides a detailed and realistic simulation of soft and bone tissue. Air voids are filled with a cellulose-polymer composite of approx. -160 HU.



# ABDOMEN PHANTOM PV CIRRHOSIS



## Specifications

Size	Approx. 234 x 190 x 129 mm 9.2 x 7.5 x 5.1 in
Weight	Approx. 3710 g 8.2 lb
Base material	Cellulose-polymer composite
Optimal tube voltage	120 kVp (cf page 3) - adaptable upon request -

## Diagnostic features

Realistic simulation of vasculature, bone and soft tissues, including the liver, pancreas, spleen, adrenals, kidneys, stomach, small intestine and colon.

- Liver cirrhosis
- Cholecystectomy
- Inferior vena cava filter
- Kidney cysts
- Kidney stone
- Enlarged lymph nodes

For more information visit  
[www.phantomx.de](http://www.phantomx.de)

# ABDOMEN PHANTOM PV CIRRHOSIS

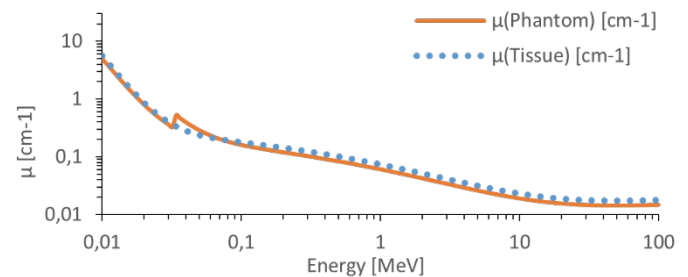
## General indications

- The phantom is made of a cellulose-polymer composite material with properties similar to hardwood. If handled carefully, it will last a long time.
- The phantom is coated with a protective layer. If the protective layer is undamaged, the phantom can be cleaned using a damp cloth (water or mild detergent).
- Protect from direct sunlight.
- Maintain a storage temperature of 10 °C to 30 °C. If the phantom is exposed to temperatures below -10 °C or above 45 °C, it can be severely damaged.
- The phantom is not equipped for dose measurements with dosimeters and it is not suited for material characterization with dual energy CT.
- The phantom is not certified as medical device.
- Air voids are filled with cellulose-polymer composite of approx. -160 HU.
- Handle with care to prevent injury or damage.
- If external damage is observed, it is recommended to consult PhantomX.

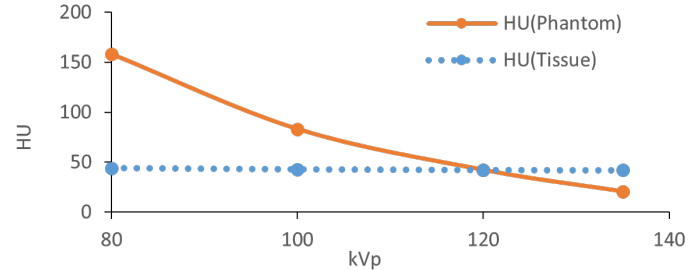
## Attenuation properties

### Soft Tissue

Linear attenuation coefficients [ $\text{cm}^{-1}$ ] (calculated)

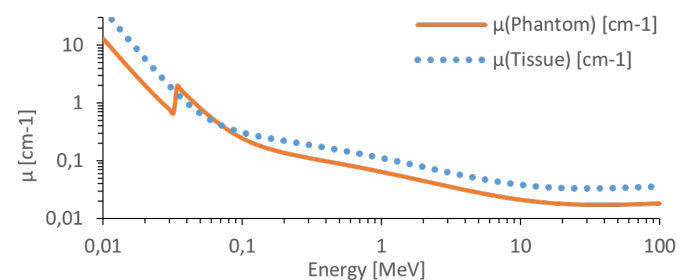


Hounsfield units (calculated)

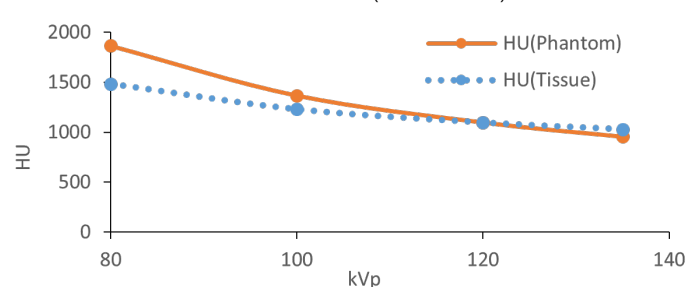


### Bone Tissue

Linear attenuation coefficients [ $\text{cm}^{-1}$ ] (calculated)



Hounsfield units (calculated)



Tissue Reference: Woodard HQ, White DR. The composition of body tissues. Br J Radiol. 1986.