

## 2.5 CM FAT RING FOR ABDOMEN PHANTOM

Age  
Category

Adult

Body  
Region

Abdomen

Target  
Modality

CT

Accessory  
type

Fat ring

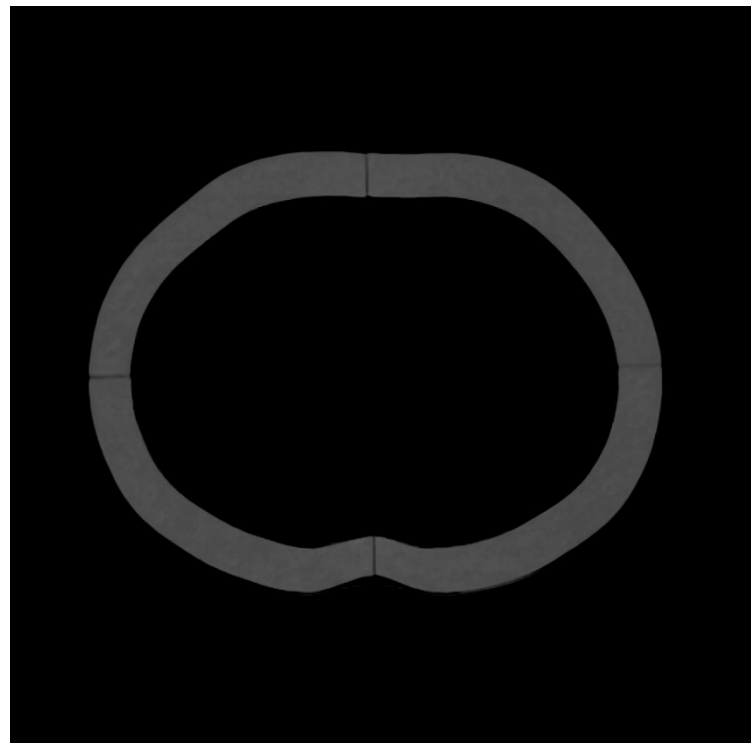


This accessory fits the following phantoms:

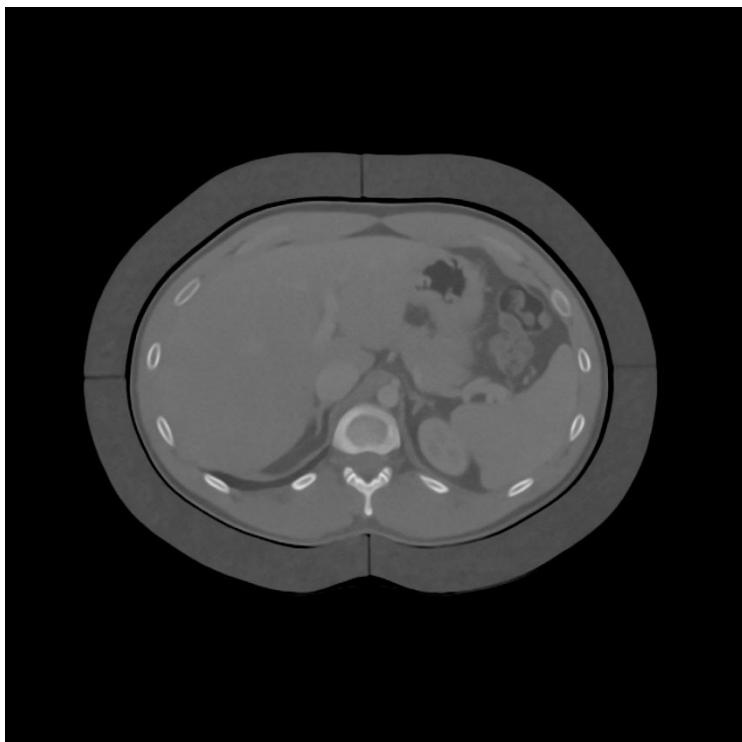
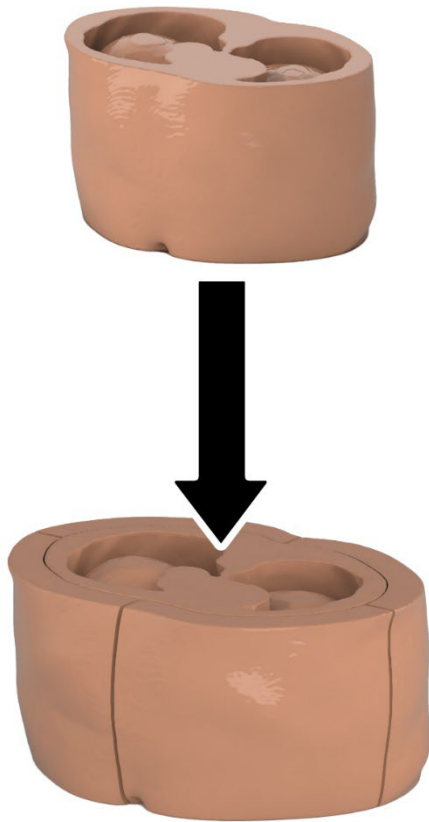
- Abdomen phantom pv  
SKU: 53-02
- Abdomen phantom pv LC spheres  
SKU: 53-03
- Abdomen phantom pv cylinders  
SKU: 53-08

This 2.5 cm thick fat ring is made of adipose tissue equivalent material and can be mounted around abdomen phantoms 53-02, 53-03 or 53-08 for scanning. It consists of four parts that fit the phantom shape.

Fat rings for other phantoms or with other thicknesses are also available upon request. Contact us at [info@phantomx.de](mailto:info@phantomx.de).



## 2.5 CM FAT RING FOR ABDOMEN PHANTOM



### Specifications

Size	Approx. 320 x 242 x 150 mm
Weight	Approx. 2670 g
Thickness	2.5 cm
Material	Cellulose-polymer composite - adipose tissue equivalent -

### Fitting phantoms

- Abdomen phantom pv  
SKU: 53-02
- Abdomen phantom pv LC spheres  
SKU: 53-03
- Abdomen phantom pv cylinders  
SKU: 53-08

For more information visit  
[www.phantomx.de](http://www.phantomx.de)

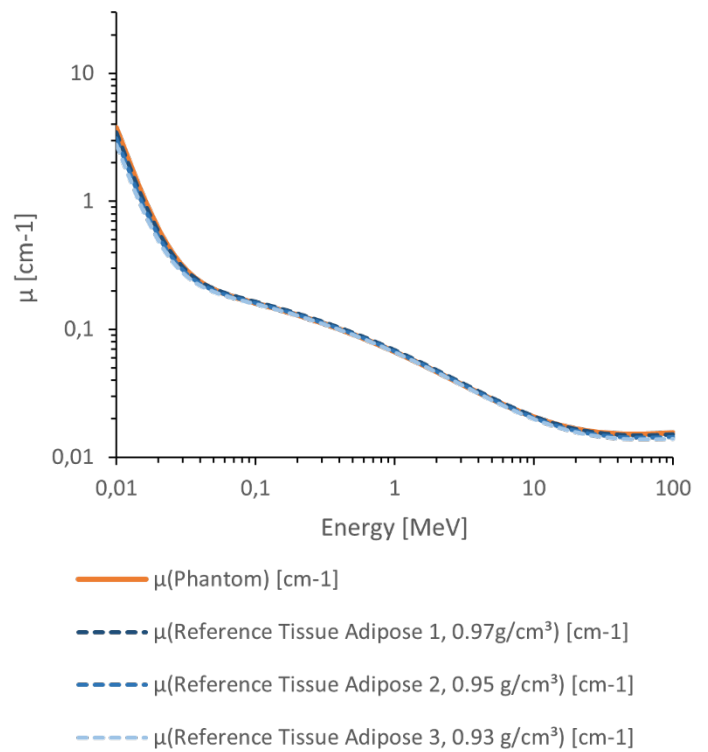
# 2.5 CM FAT RING FOR ABDOMEN PHANTOM

## General indications

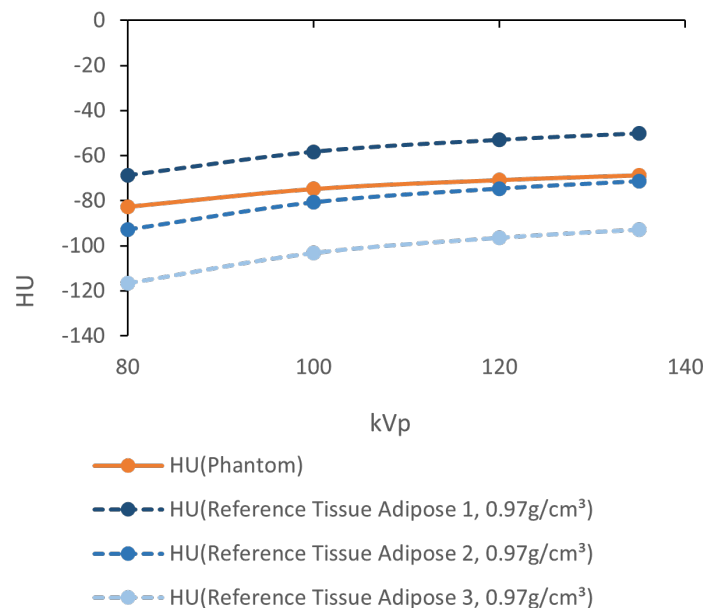
- The accessory is made of a cellulose-polymer composite material with properties similar to hardwood. If handled carefully, it will last a long time.
- The accessory is coated with a protective layer. If the protective layer is undamaged, the accessory can be cleaned using a damp cloth (water or mild detergent).
- Protect from direct sunlight.
- Maintain a storage temperature of 10 °C to 30 °C. If the accessory is exposed to temperatures below -10 °C or above 45 °C, it can be severely damaged.
- The accessory is not certified as medical device.

## Attenuation properties

Linear attenuation coefficients [ $\text{cm}^{-1}$ ] (calculated)



Hounsfield units (calculated)



Tissue Reference: Woodard HQ, White DR. The composition of body tissues. Br J Radiol. 1986.