

ABDOMEN / PELVIS PV DATA 26 DOSES

Age
Category

Adult

Body
Region

Abdomen, pelvis

Modality

CT

Diagnostic
Features

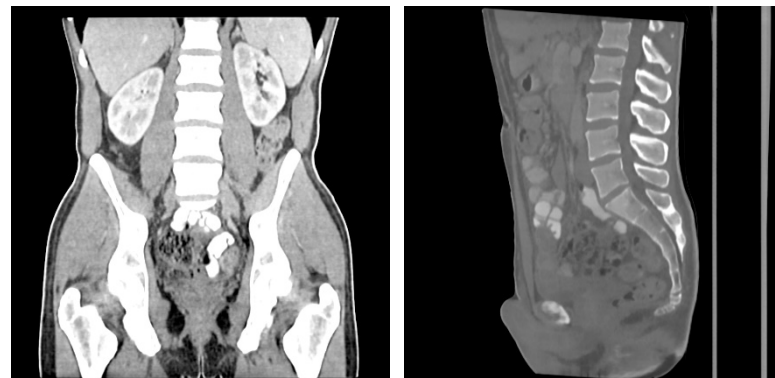
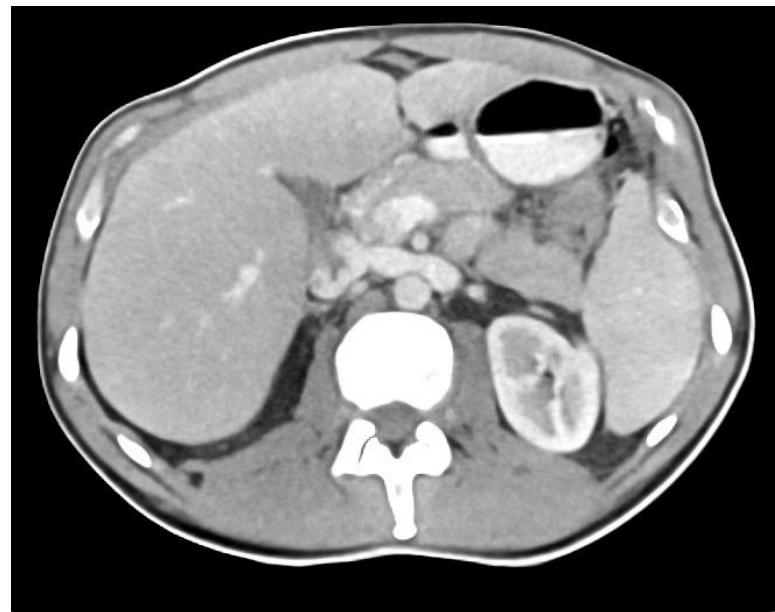
Lymph node masses

Phantom: Abdomen / pelvis phantom pv
(SKU 55-01)

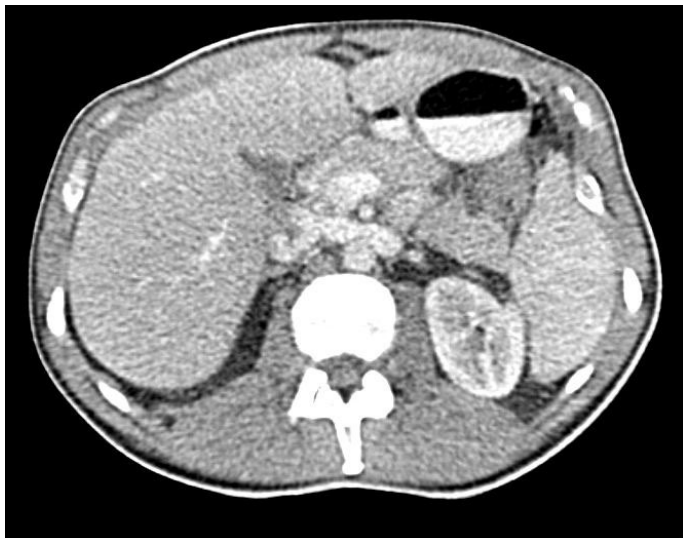
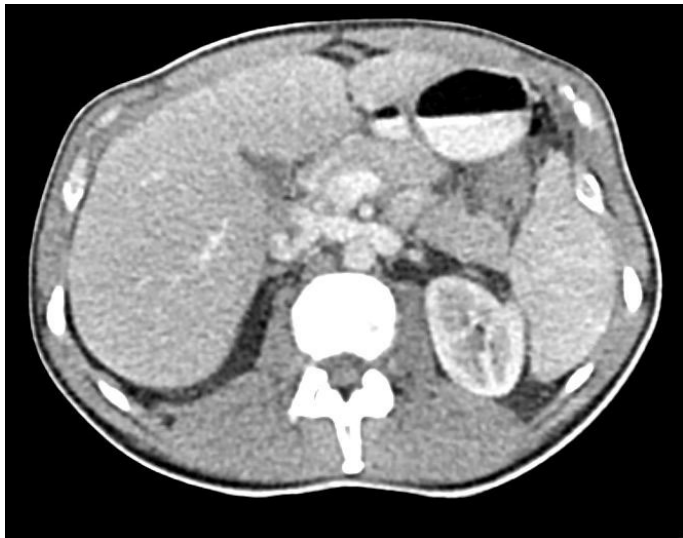
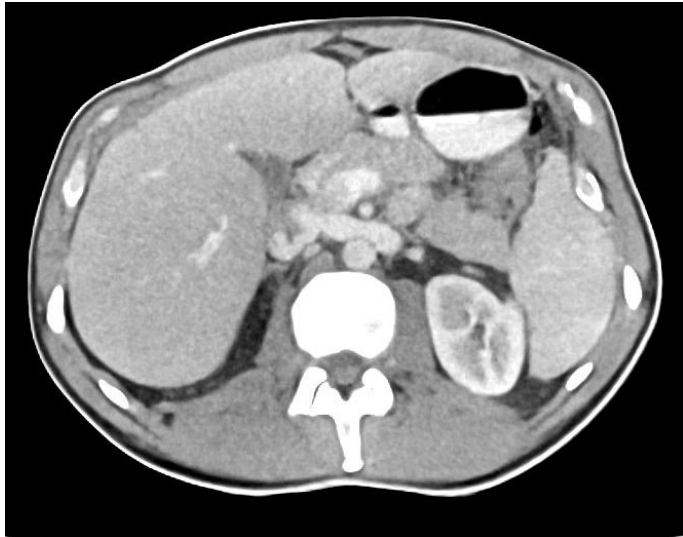
This data set comprises 244,400 axial images of abdomen / pelvis phantom 55-01 acquired with a Canon Aquilion ONE scanner.

The data is organized in 130 series with 26 doses from 0.3 to 25.5 mGy and five reconstruction methods: Filtered back projection (FBP), standard hybrid iterative reconstruction (AIDR 3D), and deep-learning reconstruction (AiCE). FBP and AIDR 3D images come with two kernels (FC08 and FC13). Five repeated acquisitions of each series are included.

The data provides comprehensive coverage of anatomy and pathology (right side external iliac lymph node masses) across various doses and reconstruction methods in state-of-the-art CT imaging.



ABDOMEN / PELVIS PV DATA 26 DOSES



Specifications

Scanner:	Canon Aquilion ONE
Size (GB):	120,16
Number of images:	244,400
Number of series:	130
Repetitions per series:	5
Images per series:	376
Image plane:	axial
Tube voltage (kVp):	120
CTDI (mGy):	0.3, 0.7, 1, 1.4, 1.7, 2.1, 2.4, 2.8, 3.1, 3.5, 3.8, 4.2, 4.5, 4.9, 5.2, 5.6, 5.9, 6.3, 6.6, 7, 8.7, 10.5, 14.6, 18.2, 21.9, 25.5
Tube current (mA):	10, 20, 30, 40, 50, 60, 70, 80, 90, 100, 110, 120, 130, 140, 150, 160, 170, 180, 190, 200, 250, 300, 400, 500, 600, 700
Rotation time (s):	0.5
Slice thickness (mm):	1
Slice increment (mm):	0.8
Kernel types:	Soft tissue
Image reconstruction:	FBP AIDR 3D AiCE

For more information visit
www.phantomx.de