

ABDOMEN / PELVIS NATIVE DATA 34 DOSES

Age
Category

Adult

Body
Region

Abdomen, pelvis

Modality

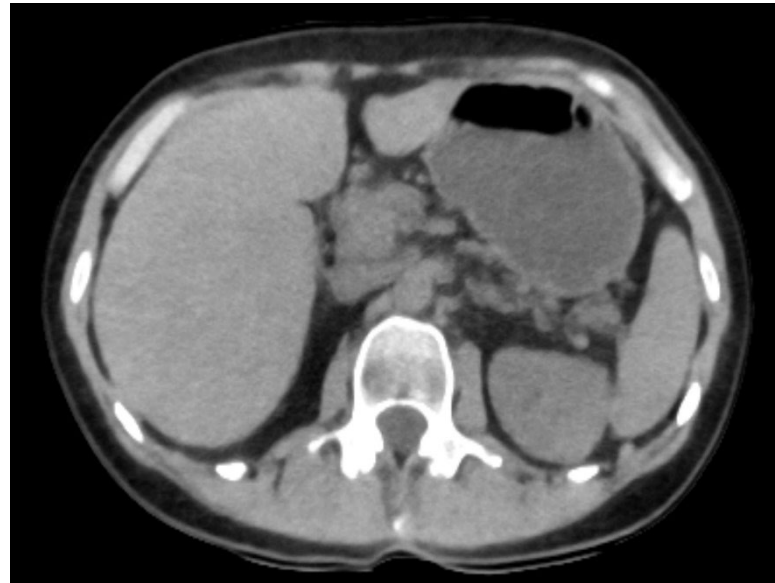
CT

Diagnostic
FeaturesPancreas mass, liver
lesionsPhantom: Abdomen / pelvis phantom native
(SKU 55-02)

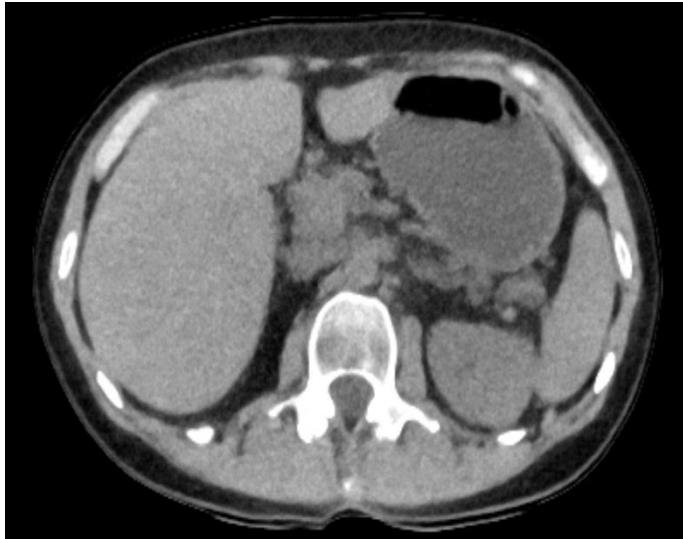
This data set comprises 360,459 axial images of abdomen / pelvis phantom 55-02 acquired with a Canon Aquilion ONE scanner.

The data is organized in 170 series with 34 doses from 0.3 to 25.5 mGy and five reconstruction methods: Filtered back projection (FBP), standard hybrid iterative reconstruction (AIDR 3D), and deep-learning reconstruction (AiCE). FBP and AIDR 3D images come with two kernels (FC08 and FC13). Five repeated acquisitions of each series are included.

The data provides comprehensive coverage of anatomy and pathology (pancreatic mass and liver lesions.) across various doses and reconstruction methods in state-of-the-art CT imaging.



ABDOMEN / PELVIS NATIVE DATA 34 DOSES



Specifications

Scanner:	Canon Aquilion ONE
Size (GB):	176,78
Number of images:	360,459
Number of series:	170
Repetitions per series:	5
Images per series:	363
Image plane:	axial
Tube voltage (kVp):	120
CTDI (mGy):	0.3, 0.7, 1.0, 1.4, 1.7, 2.1, 2.4, 2.8, 3.1, 3.5, 3.8, 4.2, 4.5, 4.9, 5.2, 5.6, 5.9, 6.3, 6.6, 7.0, 7.3, 7.7, 8.0, 8.4, 8.7, 9.1, 9.4, 9.8, 10.1, 10.5, 14.6, 18.2, 21.9, 25.5
Tube current (mA):	10, 20, 30, 40, 50, 60, 70, 80, 90, 100, 110, 120, 130, 140, 150, 160, 170, 180, 190, 200, 210, 220, 230, 240, 250, 260, 270, 280, 290, 300, 400, 500, 600, 700
Rotation time (s):	0.5
Slice thickness (mm):	1
Slice increment (mm):	0.8
Kernel types:	Soft tissue
Image reconstruction:	FBP AIDR 3D AiCE

For more information visit
www.phantomx.de