

HEAD / NECK CTA AVM DATA 1 DOSE

Age
Category

Adult

Body
Region

Head

Modality

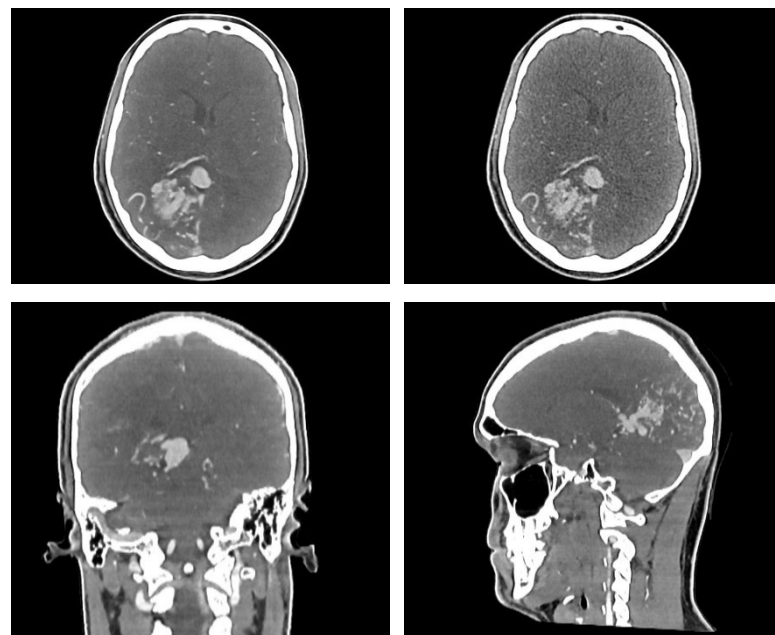
CT

Diagnostic
FeaturesArteriovenous
malformation (AVM)Phantom: Head / neck CTA phantom AVM
(SKU 51-04)

This data set comprises 6978 axial images of head / neck CTA phantom AVM 51-04 acquired with a Canon Aquilion ONE scanner.

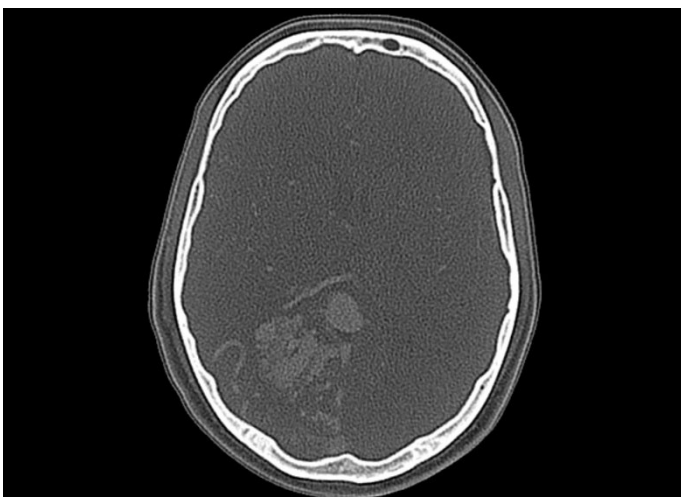
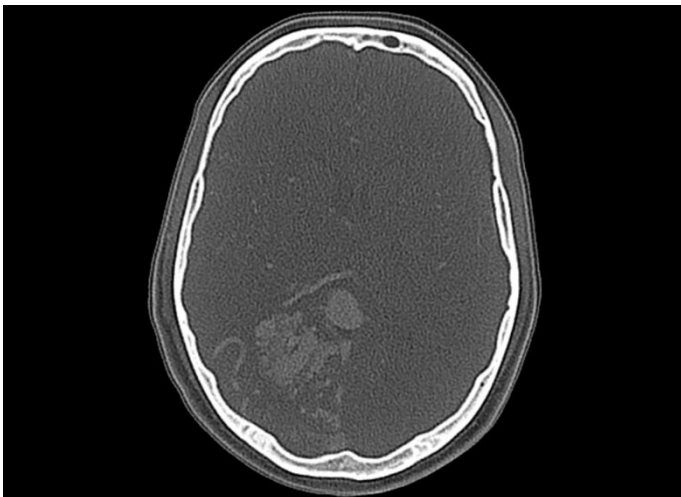
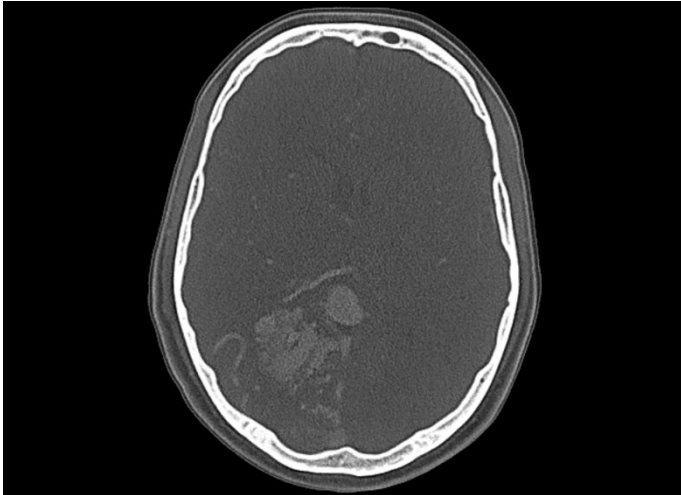
The data is organized in 16 series with a dose of 10.5 mGy and 8 reconstruction methods: Filtered back projection (FBP), standard hybrid iterative reconstruction (AIDR 3D), and deep-learning reconstruction (AiCE). FBP and AIDR 3D images come with three kernels (FC08, FC13, FC35) and AiCE comes with the "standard" and "bone" kernel. Each acquisition is available with a slice thickness of 1mm and 0.5mm.

The data provides comprehensive coverage of anatomy and pathology (arteriovenous malformation of the right hemisphere) across various reconstruction methods in state-of-the-art CT imaging.



HEAD / NECK CTA AVM

DATA 1 DOSE



Specifications

Scanner:	Canon Aquilion ONE
Size (GB):	3,43
Number of images:	6978
Number of series:	16
Repetitions per series:	1
Images per series:	Between 282 and 565
Image plane:	axial
Tube voltage (kVp):	120
CTDI (mGy):	10.5
Tube current (mA):	300
Rotation time (s):	0.5
Slice thickness (mm):	0.5, 1
Slice increment (mm):	0.5, 0.8
Kernel types:	Soft tissue, Bone
Image reconstruction:	FBP AIDR 3D AiCE

For more information visit
www.phantomx.de