

ABDOMEN LOW CONTRAST-SPHERES DATA 34 DOSES

Age
Category

Adult

Body
Region

Abdomen

Modality

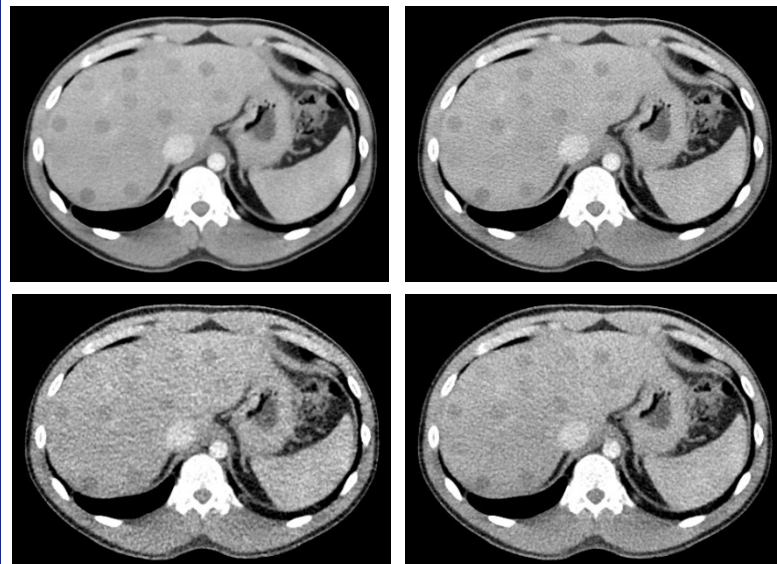
CT

Diagnostic
FeaturesMasses, Spherical
lesionsPhantom: Abdomen phantom pv LC
spheres (SKU 53-03)

This data set comprises 197,880 axial images of abdomen phantom 53-03 acquired with a Canon Aquilion ONE scanner.

The data is organized in 204 series with 34 doses from 0.3 to 25.5 mGy and six reconstruction methods: Filtered back projection (FBP), standard hybrid iterative reconstruction (AIDR 3D), model-based iterative reconstruction (FIRST), and deep-learning reconstruction (AiCE). FBP and AIDR 3D images come with two kernels (FC08 and FC13). Five repeated acquisitions of each series are included.

The data provides comprehensive coverage of anatomy and pathology (masses and spherical lesions) across various doses and reconstruction methods in state-of-the-art CT imaging.



ABDOMEN LOW CONTRAST-SPHERES DATA 34 DOSES



Specifications

Scanner:	Canon Aquilion ONE
Size (GB):	97,04
Number of images:	197,880
Number of series:	204
Repetitions per series:	5
Images per series:	194
Image plane:	axial
Tube voltage (kVp):	120
CTDI (mGy):	0.3, 0.7, 1.0, 1.4, 1.7, 2.1, 2.4, 2.8, 3.1, 3.5, 3.8, 4.2, 4.5, 4.9, 5.2, 5.6, 5.9, 6.3, 6.6, 7.0, 7.3, 7.7, 8.0, 8.4, 8.7, 9.1, 9.4, 9.8, 10.1, 10.5, 14.6, 18.2, 21.9, 25.5
Tube current (mA):	10, 20, 30, 40, 50, 60, 70, 80, 90, 100, 110, 120, 130, 140, 150, 160, 170, 180, 190, 200, 210, 220, 230, 240, 250, 260, 270, 280, 290, 300, 400, 500, 600, 700
Rotation time (s):	0.5
Slice thickness (mm):	1
Slice increment (mm):	0.8
Kernel types:	Soft tissue
Image reconstruction:	FBP, AIDR 3D, FIRST, AiCE

For more information visit
www.phantomx.de