

HEAD CTA ANEURYSM DATA 30 DOSES

Age
Category

Adult

Body
Region

Head

Modality

CT

Diagnostic
Features

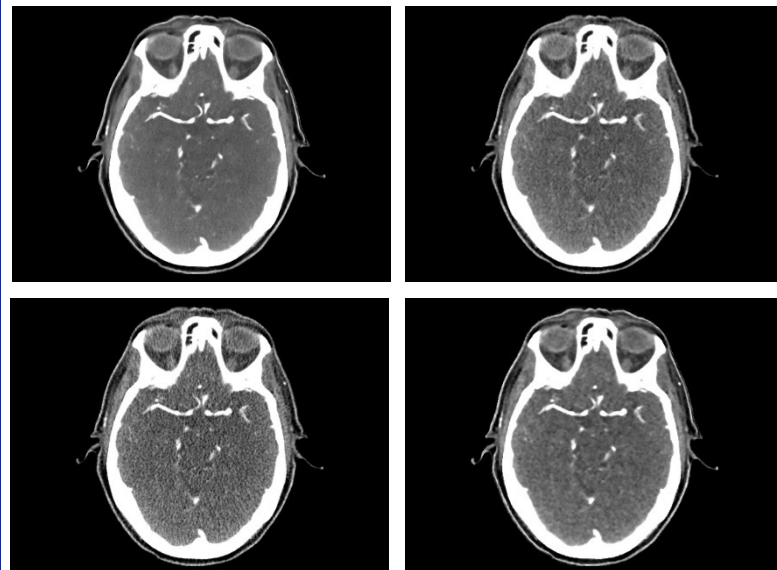
Brain aneurysms

Phantom: Head CTA phantom Aneurysm
(SKU 50-03)

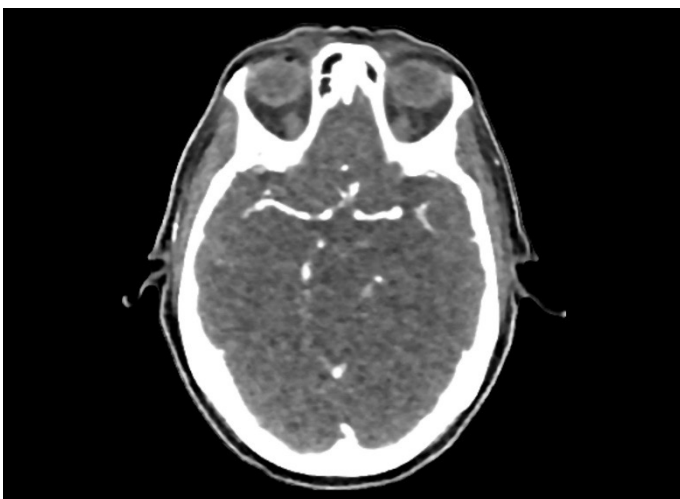
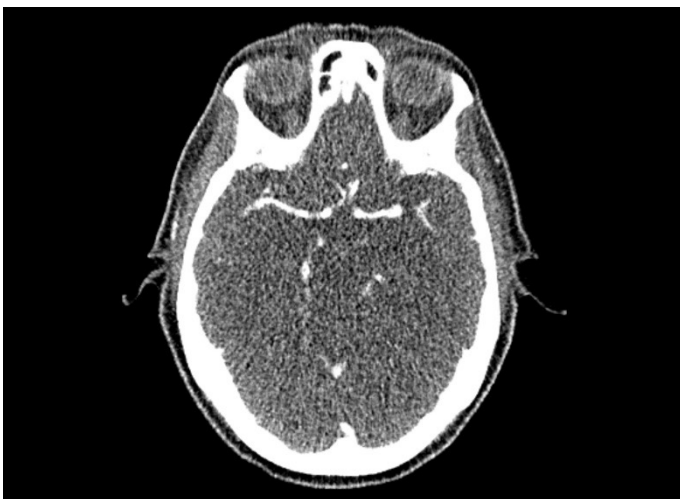
This data set comprises 39.000 axial images of head CTA phantom aneurysm 50-03 acquired with a Canon Aquilion ONE scanner.

The data is organized in 120 series with 30 doses from 0.1 to 10.5 mGy and four reconstruction methods: Filtered back projection (FBP FC26), hybrid iterative reconstruction (AIDR 3D FC26), model-based iterative reconstruction (FIRST), and deep-learning reconstruction (AiCE).

The data provides comprehensive coverage of anatomy and pathology (three intracranial aneurysms) across various reconstruction methods in state-of-the-art CT imaging.



HEAD CTA ANEURYSM DATA 30 DOSES



Specifications

Scanner:	Canon Aquilion ONE
Size (GB):	19.02
Number of images:	39.000
Number of series:	120
Repetitions per series:	1
Images per series:	325
Image plane:	axial
Tube voltage (kVp):	120
CTDI (mGy):	0.1, 0.2, 0.3, 0.7, 1.0, 1.4, 1.7, 2.1, 2.4, 2.8, 3.1, 3.5, 3.8, 4.2, 4.5, 4.9, 5.2, 5.6, 5.9, 6.3, 6.6, 7.0, 7.3, 7.7, 8.0, 8.4, 8.7, 9.1, 9.4, 9.8, 10.1, 10.5
Tube current (mA):	10, 20, 30, 40, 50, 60, 70, 80, 90, 100, 110, 120, 130, 140, 150, 160, 170, 180, 190, 200, 210, 220, 230, 240, 250, 260, 270, 280, 290, 300
Rotation time (s):	0.5
Slice thickness (mm):	0.5
Slice increment (mm):	0.5
Kernel types:	Soft tissue
Image reconstruction:	FBP, AIDR 3D AiCE, FIRST

For more information visit
www.phantomx.de